



MONTHLY MEMBERSHIP PROGRESS REPORT

District 5M 6

Results as of: 3/31/2015

GMT: Judy Hankom

LOCATION MINNESOTA

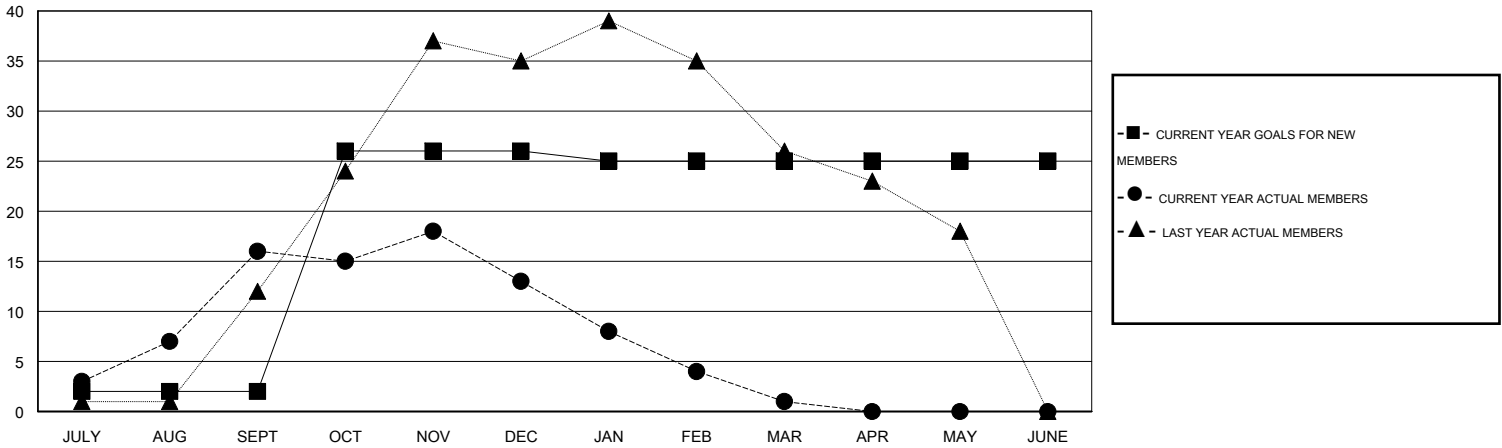
GMT CA 1

| Clubs | | | | | Members | | | | |
|-----------------------|---------------|-----------|---------------|---------------|-----------------------|-----------------|-------------------------------|-----------------|---------------|
| RESULTS FOR 2014-2015 | | | | | RESULTS FOR 2014-2015 | | | | |
| QUARTER | NEW CLUB GOAL | NEW CLUBS | DROPPED CLUBS | NET GAIN/LOSS | QUARTER | NEW MEMBER GOAL | CHARTER AND NEW MEMBERS ADDED | DROPPED MEMBERS | NET GAIN/LOSS |
| JULY/AUG/SEPT | 0 | 0 | 0 | 0 | JULY/AUG/SEPT | 2 | 48 | 32 | 16 |
| OCT/NOV/DEC | 1 | 0 | 0 | 0 | OCT/NOV/DEC | 24 | 43 | 46 | -3 |
| JAN/FEB/MAR | 0 | 0 | 0 | 0 | JAN/FEB/MAR | -1 | 31 | 43 | -12 |
| APR/MAY/JUNE | 0 | 0 | 0 | 0 | APR/MAY/JUNE | 0 | 0 | 0 | 0 |

GOALS AND ACTUAL NEW CLUBS CUMULATIVE



GOALS AND ACTUAL MEMBERS CUMULATIVE



| | | | | | |
|------------------------|--|---|----------------|---------------------|-----|
| DROPPED CLUBS: 0 | 25 CLUBS OF 38 ADDED 1 OR MORE NEW MEMBERS | <u>GENDER DISTRIBUTION</u> | | | |
| <u>DROPPED MEMBERS</u> | | MALE | 1,062 (71.18%) | | |
| DECEASED | 17 | FEMALE | 430 (28.82%) | | |
| CLUB CANCELLED | 0 | CLICK HERE FOR HEALTH ASSESSMENT DATA | | | |
| OTHER | 104 | | | FAMILY UNIT MEMBERS | 244 |
| TOTAL | 121 | | | HEAD OF HOUSEHOLD | 120 |
| | | NON-HEAD OF HOUSEHOLD | 124 | | |